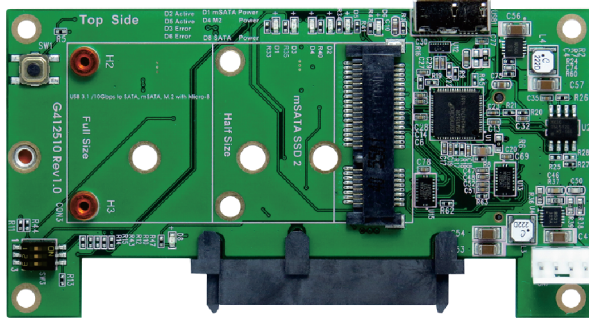


# 3 IN 1

## USB 3.1 Micro-B for mSATA & M.2 & SATA

Top Side



### Features

- Build in ASM1352R USB3.1 high performance processor
- Build in SATA 22pin Female connector
- Build in Mini PCI-e Female connector
- Build in M.2 B-key Female connector
- Each of PWM synchronous Power IC for mSATA & M.2 SSD independently
  - ※3A maximum output current
  - ※Short circuit protection
  - ※In-rush current suppression
  - ※Thermal shutdown protection
  - ※ESD HBM (Human Body Mode)/2KV
- D1 Green LED on indicates mSATA or Power ready
- D4 Green LED indicates M.2 Power ready
- D8 Green LED indicates 2.5" SATA Power ready
- D2, D5 Red LED Blinking indicates SSD active status
- D3, D6 Red LED Blinking indicates SSD active status

### Specifications

- Compliant with USB3.1 Specification Revision 1.0
- Support UASP and Mass Storage Class Overview Rev1.4
- Support SATA Reversion 3.2
- Compliant with PCI Express M.2 Specification Version 1.0
- PCI Express Mini Card Electromechanical Specification 1.2

### Support M.2 M-key Form Factor

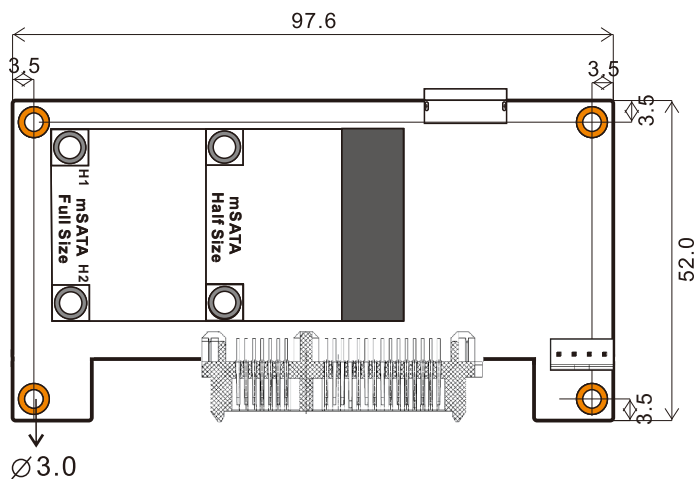
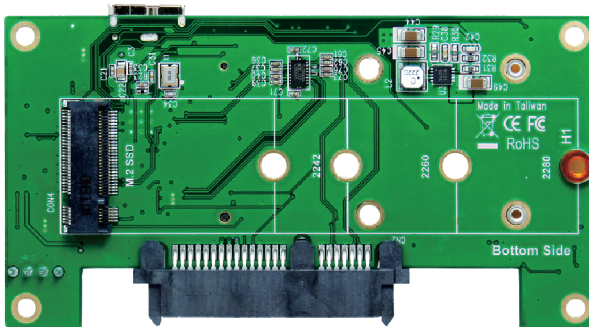
- Type 2280-D2-B-M: 80mm(L) x 22mm(W)
- Type 2260-D2-B-M: 60mm(L) x 22mm(W)
- Type 2242-D2-B-M: 42mm(L) x 22mm(W)
- Type 2230-D2-B-M: 30mm(L) x 22mm(W)

### Support mSATA SSD Form Factor

- Full size: 50.95 mm (L) x 30mm (W)
- Half size: 26.8 mm (L) x 30 mm (W)

Notice: 2.5" SSD / HDD, M.2 SSD or mSATA SSD, only two can work, 2.5" SSD / HDD would be priority.

Bottom Side



SATA  
7+15pin

M.2  
SATA I/F

mSATA

